

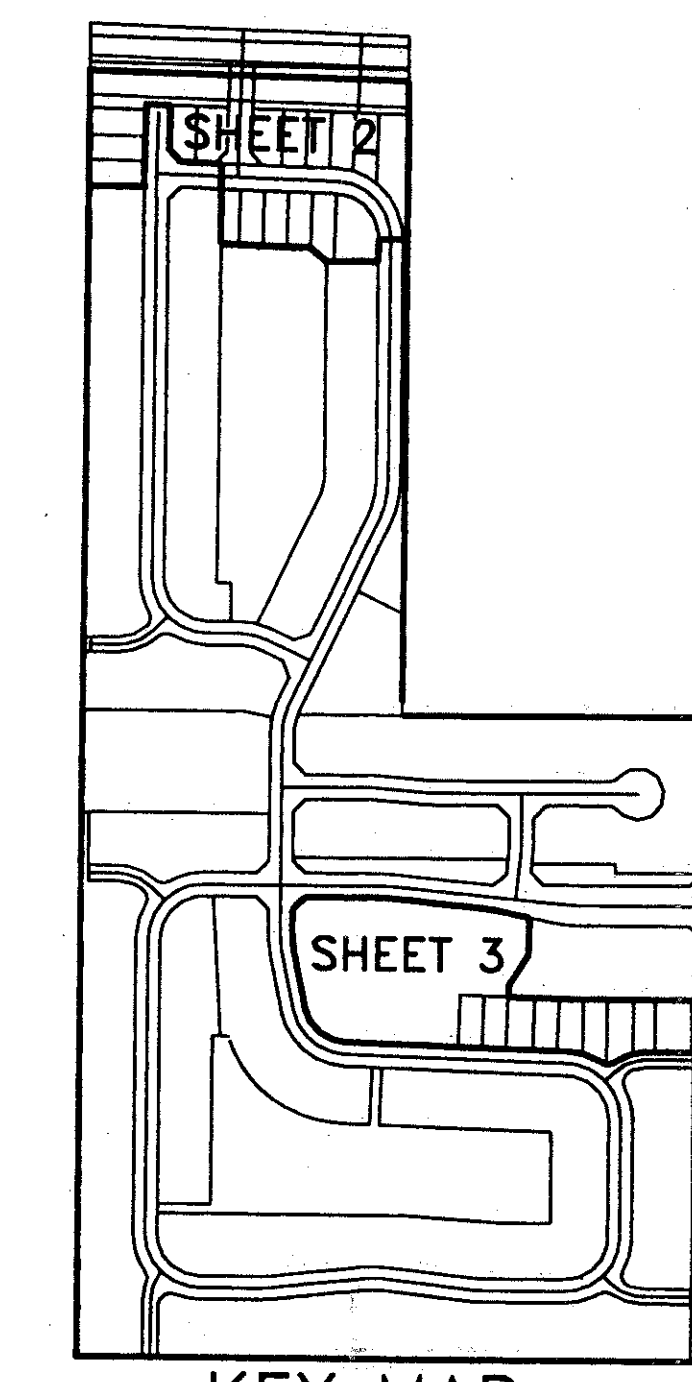
0626-002

113

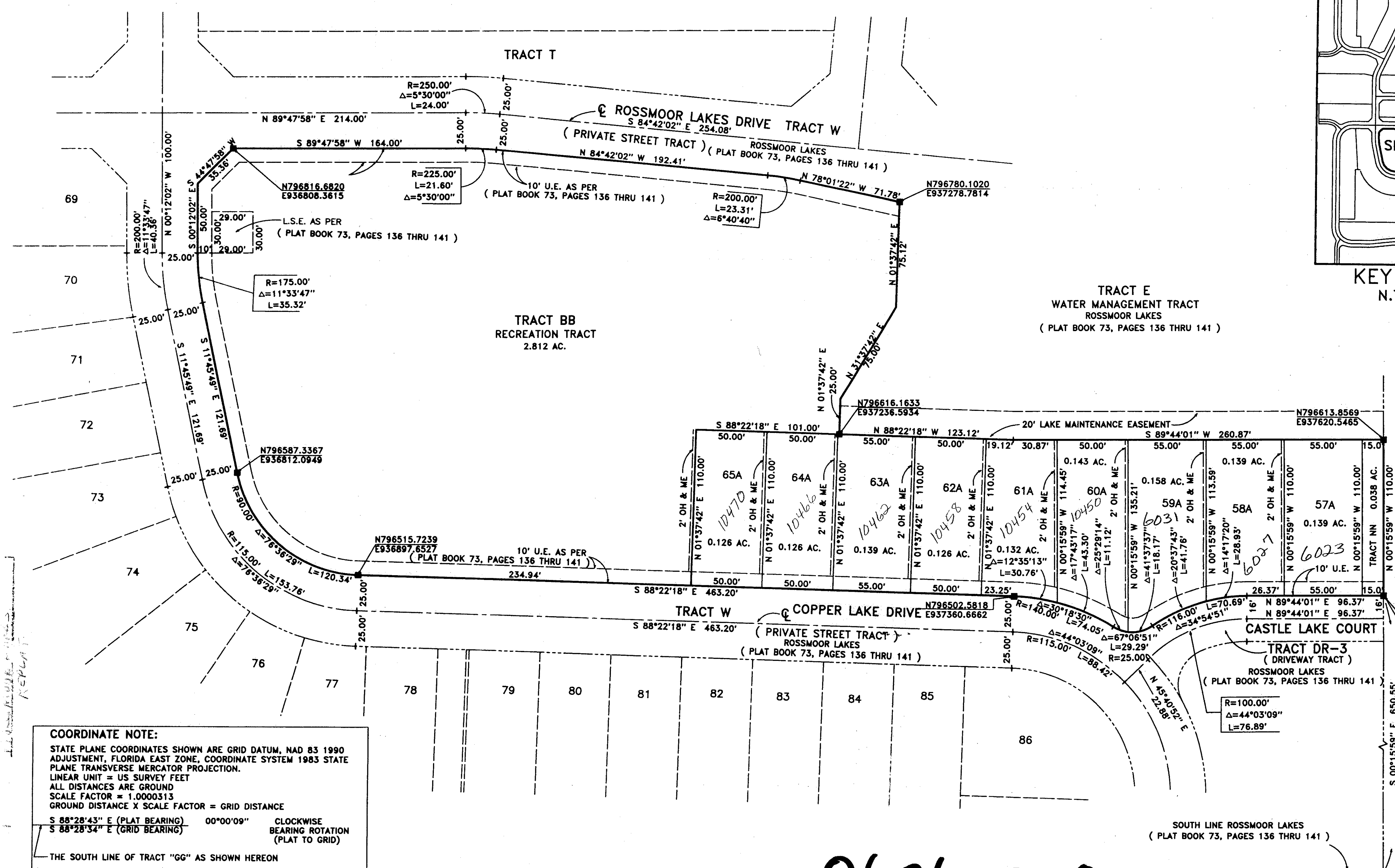
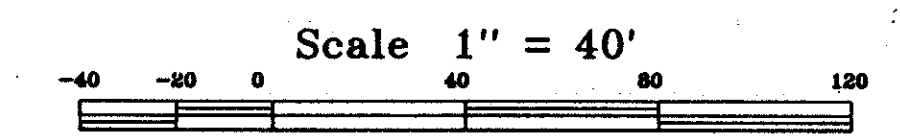
ROSSMOOR LAKES REPLAT

BEING A REPLAT OF A PORTION OF ROSSMOOR LAKES
AS RECORDED IN PLAT BOOK 73, PAGES 136 THRU 141,
PUBLIC RECORDS OF PALM BEACH COUNTY, FLORIDA AND
LYING IN SECTION 27, TOWNSHIP 45 SOUTH, RANGE 42 EAST,
PALM BEACH COUNTY, FLORIDA.
FEBRUARY 1997 SHEET 3 OF 3

STATE OF FLORIDA
COUNTY OF PALM BEACH SS
This Plat was filed for record at _____
M. This day of _____, 19____
and duly recorded in Plat Book No. _____
on Page _____
Dorothy H. Wilken, Clerk of the Circuit Court
By _____ D.C.



*Per. 93-34
Alloc. # 0001
5/3/3/14*



COORDINATE NOTE:
STATE PLANE COORDINATES SHOWN ARE GRID DATUM, NAD 83 1990
ADJUSTMENT, FLORIDA EAST ZONE, COORDINATE SYSTEM 1983 STATE
PLANE TRANSVERSE MERCATOR PROJECTION.
LINEAR UNIT = US SURVEY FEET
ALL DISTANCES ARE GROUND
SCALE FACTOR = 1.0000313
GROUND DISTANCE X SCALE FACTOR = GRID DISTANCE
S 88°28'43" E (PLAT BEARING) 00°00'09" CLOCKWISE
S 88°28'34" E (GRID BEARING) BEARING ROTATION
(PLAT TO GRID)

THE SOUTH LINE OF TRACT "GG" AS SHOWN HEREON

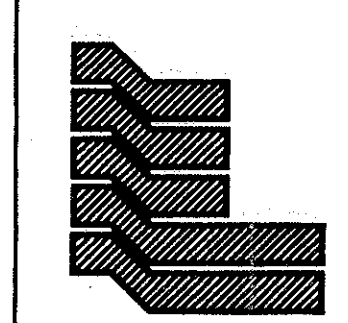
SUBDIVISION: ROSSMOOR LAKES
BOOK 80 REPLAT
PAGE 113
FLOOD ZONE B
FLOOD MAP #15A
GRID # 25
ZONING RD
ZIP CODE 33477

VALLY P. B. CO. BRASS
DISK IN CONC. MON.
N798511.285
E937711.348

PUFF P.B. CO. BRASS DISK
IN CONC. MON.
N795879.310
E937689.881

0626-002

80/113



Landmark Surveying & Mapping Inc.
LB. NO. 4396
1850 FOREST HILL BOULEVARD
PH. (561)433-5405 SUITE 100 W.P.B. FLORIDA

ROSSMOOR LAKES REPLAT